



# European Fishing Line



## New Fluorescent Dyes **Red** and **Far-Red**

Two more Nucleic Acid labelling Kits have been added to our range of chemical labelling kits (ULS™). This dyes show similar characteristics to the Cy3 and Cy5 dyes:

### Dy555

Absorption:  $\lambda$  max = 555  $\pm$  5 nm

Emission:  $\lambda$  max = 580  $\pm$  5 nm

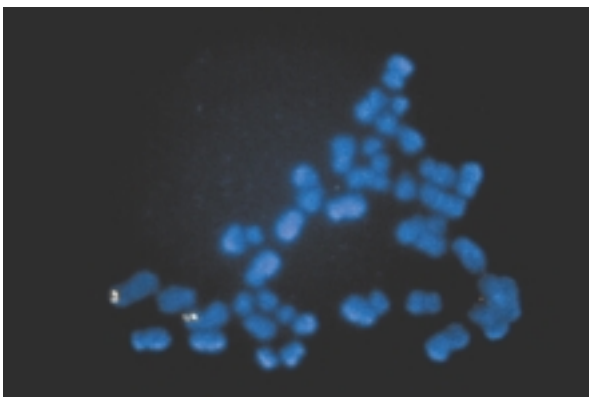
### Dy630

Absorption:  $\lambda$  max = 630  $\pm$  5 nm

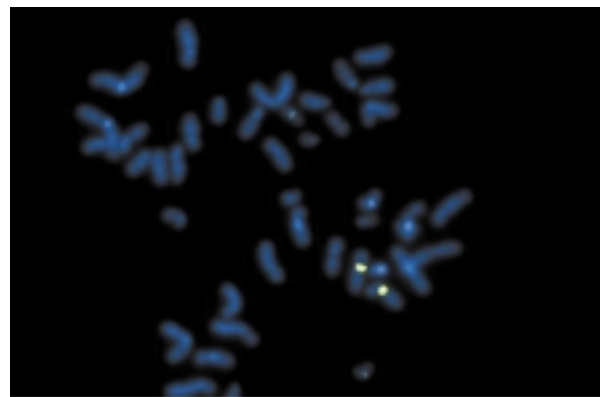
Emission:  $\lambda$  max = 648  $\pm$  5 nm

Both dyes have been modified using a hexanediamine spacer between the platinum moiety and the fluorophores.

The dyes have been tested by labelling three probe types, a total chromosome-paint, an Alpha Satellite and a BAC probe, in different ratio's (depending on the type of Dye).



Dy555 BAC, specific for n-myc gene region (2p24)



Dy630 Alpha Satellite 7

### Ordering information:

DLKDY555                      Dy555 Direct labelling Kit, 30  $\mu$ g DNA  
DLKDY630                      Dy630 Direct labelling Kit, 30  $\mu$ g DNA

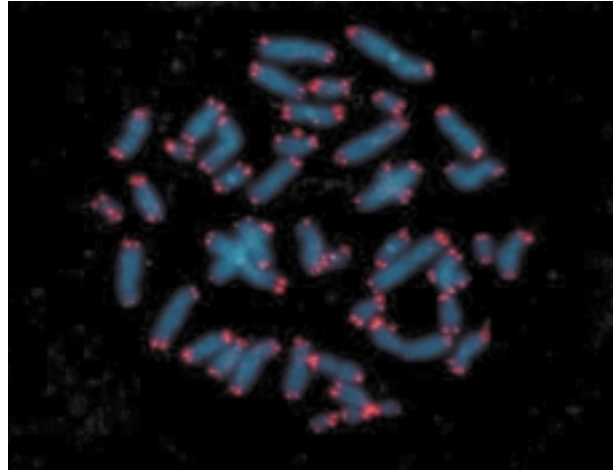
The Universal Linkage System (ULS™) technology is covered by an international patent family for the linkage of any label to bio-organic molecules, owned by KREATECH Biotechnology BV, The Netherlands. This product or the use of this product may be covered by one or more patents of KREATECH Biotechnology BV, including, but not restricted to, the following: EP 0,539,466; US 5,580,990; US 5,714,327; US 5,985,566; US 6,133,038; and EP 1,019,420.

## All Human Telomere

The All Human Telomere (AHT) probe is based on multiple copies of the (TTAGGG)<sub>n</sub> repeat unit, which is found at the end of each human chromosome and also in many other species. Our probe can be used in combination with any other DNA based probe (such as Satellites, paints, or any unique sequence probe) and will allow quantification of Telomeric end sequences (detailed protocol under evaluation).

### Ordering Information:

PAHT1000-R All Human Telomere Probe, red,  
10 Tests



## Technical Advisor

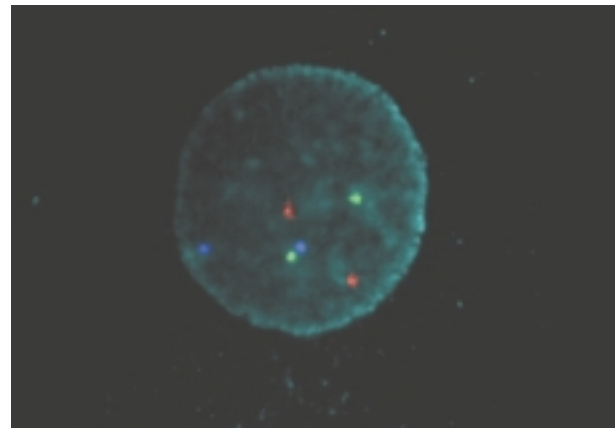
### Triple-colours - easily viewed

Our choice of fluorescent colours allows simultaneous visualisation of all Qbiogene probes or probe combinations labelled in blue (Aqua or DEAC), green (FLU or dGreen), and Red (Rhodamine) in our standard Triple-Band-pass Filter.

S1900 DAPI/FITC/Rhodamine Triple Band-pass Filter

Filter orders require a confirmation of the type of Microscope and if a cube or slider is required. Filter mounting is only included if a cube or slider is ordered.

For further information please contact  
techserveur@qbiogene.com



PSAT3717 Alpha-Sat. 3, 7, 17, triple-colour

## Meetings 2004

### You can meet us at the following meetings

Meeting	Date	Location
USCAP	March 6-12	Orlando, FL
SFH	March 7-9	Paris, F
AACR	March 28-31	Orlando, FL
ASCT	April 2-4	Asheville, NC
ACC	April 19-20	York, UK
17. Tumorzytogenetische Arbeitstagung	May 13-15	Hohwacht (Ostsee)
ESHG	June, 12-15	Munich
AGT	June 17-20	Garden Grove, CA

# SubTelomere Probes-Update

Some additional specific Telomere probes have been added. Our current range is almost finished, however, three regions are still not covered, which are 1pter, 4qter, and 8pter. For further updates and information please call or contact techserveur@qbiogene.com

Catalogue No.	Probe Description	STS Marker	Old Reference
<b>PTEL01P</b>	<b>Tel 1p DNA Probe</b>		<b>CP5401</b>
PTEL01Q	Tel 1q DNA Probe	D1S555	CP5402
<b>PTEL02P</b>	<b>Tel 2p DNA Probe</b>	<b>D2S2147</b>	<b>CP5403</b>
<b>PTEL02Q</b>	<b>Tel 2q DNA Probe</b>	<b>D2S2042</b>	<b>CP5404</b>
PTEL03P	Tel 3p DNA Probe	D3S4558	CP5405
PTEL03Q	Tel 3q DNA Probe	D3S4168	CP5406
PTEL04P	Tel 4p DNA Probe	D4S3360	CP5407
<b>PTEL04Q</b>	<b>Tel 4q DNA Probe</b>		<b>CP5408</b>
PTEL05P	Tel 5p DNA Probe	D5S2488	CP5409
PTEL05Q	Tel 5q DNA Probe	D5S2006	CP5410
<b>PTEL06P</b>	<b>Tel 6p DNA Probe</b>	<b>RH40931</b>	<b>CP5411</b>
<b>PTEL06Q</b>	<b>Tel 6q DNA Probe</b>	<b>D6S2523</b>	<b>CP5412</b>
<b>PTEL07P</b>	<b>Tel 7p DNA Probe</b>	<b>D7S2644</b>	<b>CP5413</b>
PTEL07Q	Tel 7q DNA Probe	D7S427	CP5414
<b>PTEL08P</b>	<b>Tel 8p DNA Probe</b>		<b>CP5415</b>
PTEL08Q	Tel 8q DNA Probe	D8S595	CP5416
<b>PTEL09P</b>	<b>Tel 9p DNA Probe</b>	<b>D9S917</b>	<b>CP5417</b>
<b>PTEL09Q</b>	<b>Tel 9q DNA Probe</b>	<b>D9S1838</b>	<b>CP5418</b>
PTEL10P	Tel 10p DNA Probe	D10S2488	CP5419
PTEL10Q	Tel 10q DNA Probe	D10S2290	CP5420
<b>PTEL11P</b>	<b>Tel 11p DNA Probe</b>	<b>D11S1363</b>	<b>CP5421</b>
<b>PTEL11Q</b>	<b>Tel 11q DNA Probe</b>	<b>D11S4437</b>	<b>CP5422</b>
PTEL12P	Tel 12p DNA Probe	D12S158	CP5423
PTEL12Q	Tel 12q DNA Probe	D12S399	CP5424
PTEL13Q	Tel 13q DNA Probe	D13S1160	CP5425
PTEL14Q	Tel 14q DNA Probe	D14S1419	CP5426
PTEL15Q	Tel 15q DNA Probe	80 kb distal to D15S936	CP5427
<b>PTEL16P</b>	<b>Tel 16p DNA Probe</b>	<b>D16S521</b>	<b>CP5428</b>
<b>PTEL16Q</b>	<b>Tel 16q DNA Probe</b>	<b>RH-25942</b>	<b>CP5429</b>
PTEL17P	Tel 17p DNA Probe	D17S643	CP5430
PTEL17Q	Tel 17q DNA Probe	D17S724	CP5431
PTEL18P	Tel 18p DNA Probe	D18S1244	CP5432
PTEL18Q	Tel 18q DNA Probe	D18S1390	CP5433
PTEL19P	Tel 19p DNA Probe	D19S814	CP5434
PTEL19Q	Tel 19q DNA Probe	D19S989	CP5435
PTEL20P	Tel 20p DNA Probe	D20S1156	CP5436
<b>PTEL20Q</b>	<b>Tel 20q DNA Probe</b>	<b>RH44234</b>	<b>CP5437</b>
PTEL21Q	Tel 21q DNA Probe	D21S1446	CP5438
PTEL22Q	Tel 22q DNA Probe	D22S1056	CP5439
PTELYYP	Tel XpYp DNA Probe	DXYS130	CP5440
PTELYYq	Tel XqYq DNA Probe	DXYS224	CP5441

For green Fluorophore (dGreen) add -G, for red Fluorophore (Rhodamine) add -R to catalogue #.

All probes are provided for 5-test, with 15 µl of probe + 35 µl of Hybridization buffer. Up to 4 probes can be mixed in one hybridization assay (end-volume 12 µl per 22 x 22 mm area)

# Workshops 2004

In 2004 our European workshop series will have been running for a 10 years. In the past decade FISH has developed from a research art into a clinical research tool involved in the daily diagnostic work of cytogenetic laboratories.

Our workshops will still help to provide lab proficiency for the daily routine for newcomers, but also emphasise technical details to guarantee excellent research results for the more experienced.

Our 2004 workshops will be 3 days and combine the Metaphase/Interphase and Tissue Molecular Cytogenetic workshops of previous years.

Part 1 will focus on

- sample preparation, hybridisation, post-hybridisation
- single, dual, and triple-colour hybridisation
- microdeletion and Telomere specific probes
- translocation probes in oncology
- total chromosome and arm-specific paint probes

Part 2 will focus specifically on tissue sections

- sample preparation, pretreatment and digestion, including evaluation of digestion
- probe selection, ready-to-use probes v's mixtures
- basic fluorescence microscopy and filter selection
- evaluation of results

**Dates 2004: June 23 - 25**

**December 8 - 10**

**Fees:** 800 €, 520 GBP, 1500 CHF including accommodation for 3 nights at the Holiday Inn, Illkirch (incidental expenses are excluded), all lunches, and the famous Alsatian dinner (make sure to leave room for the dessert).

## FAX BACK

+33 (0) 3 8867 1945

### Contact Details

Name (Title): .....

Department.....

Address.....

Postcode.....

Tel..... Fax.....

E-mail.....


### Please send me the following information.....

I would like to register for the workshop: June, 23-25

December, 8-10

Please send me the 2004 Qbiogene Molecular Biology Catalogue

Please tick this box if you do not wish to be retained on our mailing list

 <p>LIT9012 / 2004jan</p>	<p><b>France &amp; Belgium, Suisse</b></p> <p>Tel: +33 (0) 388 675 425          Fax: +33 (0) 388 671 945          Tech : +33 (0) 388 675 423          techservfr@qbiogene.com</p>	<p><b>Deutschland, Österreich, Schweiz</b></p> <p>Tel: 0800 409058          Fax: +49 (0)6221 411062          Tech: +49 (0)6221 894 231          techservde@qbiogene.com</p>	<p><b>United Kingdom</b></p> <p>Tel: 0800 328 8401          Fax: 0800 085 3090          Tech: 0800 328 8401          techservuk@qbiogene.com</p>
--	---	---	--