



European Fishing Line

HAPPY NEW YEAR 2003

Goyosa Añada benién
Bloavez mad
feliç Any Nou!
Bon di, bon' annu 2003
Stastny Novy Rok
Luk àn freese ònjt nai iir!
Ein glückliches neues Jahr!
Ukiortaami pilluaritsi

Felice Anno Nuovo
Año bueno
Linksmu Nauju Metu
Godt Nytt År
Szczesliwego Nowego Roku
Feliz Ano Novo!
Vantirevel Bumang
Buerie Orre Jaepie!

Bliadhna Mhath Ur
Gott Nytt År
Blwyddyn Newydd Dda
Srechno Novo Leto
Bonus prinzipius e mellus finis
Vantirevel Bumang
La Multi Ani
I n lokkich nijjier

These are 25 New Year greetings from Europe.

Identify at least 20 languages (or dialects) to receive a gift !

Send us you answer by fax or E-mail (see last page)

Human Arm Specific Probes

New in 2003

Due to our microdissection custom service we will also introduce a range of Human Chromosome Arm specific probes. These probes will not be a regular stocking item, however, we will try to supply these probes in less than 3 weeks time. For more "important" half-arm paints we will keep stock - please inquire for availability.

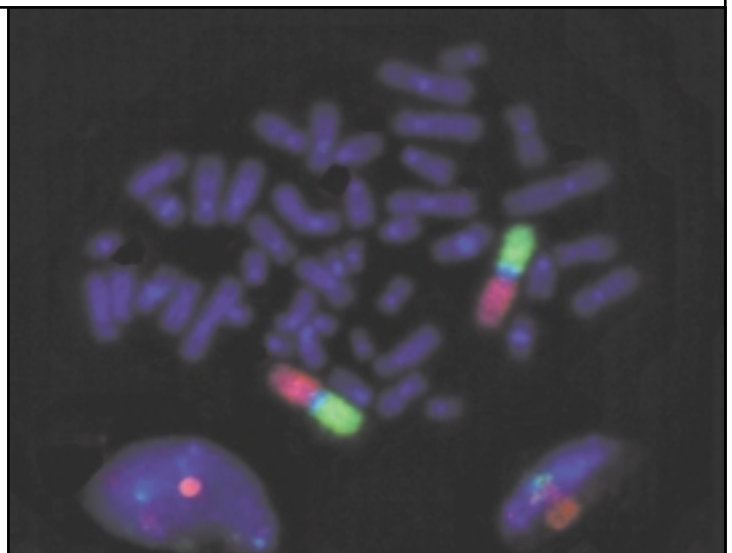
Ordering Information:

Cat.#	Description	Tests
BSP001P	Chromosome 1p	10
BSP001Q	Chromosome 1q	10
.....	
BSP023Q	Chromosome Xq	10
BSP024P	Chromosome Yp	10

Please add -G for Green or -R for Red fluorochrom respectively

For acrocentric Chromosomes (13, 14, 15, 21, 22, and Y) only q-arm probes will be available.

Heterochromatic areas (e.g 1qh, 9qh, or Yq) will not be covered by this type of probe.



Now available - CLL 6 Probe Panel

B-CLL Probes

PONC0621	6q21 specific DNA Probe with Alpha-Satellite 6, dual-color New !
PONC1111	11q23 (ATM) DNA Probe with Alpha-Satellite 11, dual-color New !
PONC0824	8q24 (c-myc) DNA Probe with Alpha-Satellite 8, dual-color
PONC1123	11q23 (ATM) DNA Probe, Red
PONC1213	12q13 (GLI3)1 DNA Probe, Red
PONC1210	12q13 (GLI3) DNA Probe with Alpha-Satellite 12, dual-color
PONC1325	13q14 (13S272) DNA Probe
PONC1753	17p13.1 (p53) DNA Probe with Alpha-Satellite 17, dual-color

This probe portfolio is based on publications by H. Döhner et al., in N Eng J Med 2000; 343, 1910-6.

These direct labeled probes have been tested and qualified on cultured cells, blood smears and paraffinembedded tissue sections.

A special price will now apply for the complete panel of the **6 probes (cat# PONC6CLL)**. For further information, please inquire.

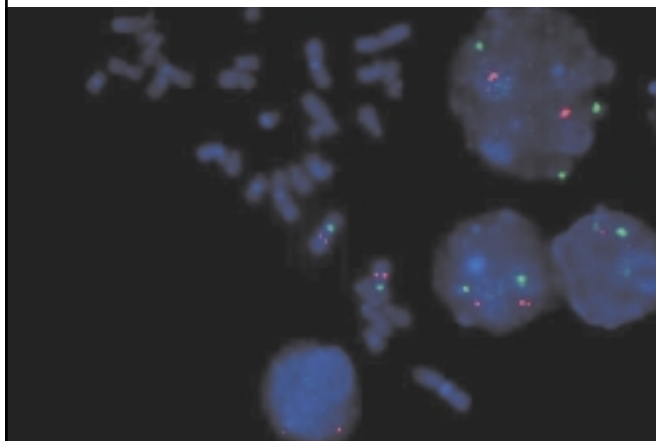
Table 1. Incidence of Chromosomal Abnormalities in 325 Patients with Chronic Lymphocytic Leukemia

Aberration	No. of Patients (%) [*]
13q deletion	178 (55)
11q deletion	58 (18)
12q trisomie	53 (16)
17p deletion	23 (7)
6q deletion	21 (6)
8q trisomie	16 (5)
t(14q32)	12 (4)
3q trisomie	9 (3)
Clonal abnormalities	268 (82)
Normal karyotype	57 (18)

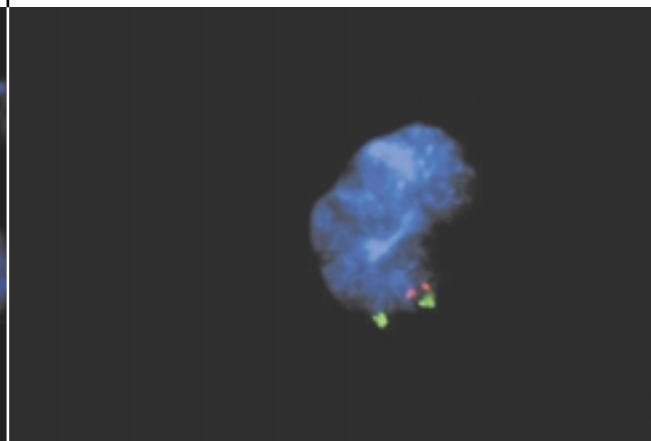
^{*} One hundred seventy-five patients had one aberration, 67 had two aberrations, and 26 had more than two aberrations.

Related Probes:

CONC1418	BCL-2/IGH t(14;18) dual-color, dual-fusion
PONC0320	3q26 (hTERC) / Alphasat. 3 cocktail, dual-colour



PONC0621 6q21 specific DNA Probe with Alpha-Sat 6, dual-colour



PONC1111 11q23 ATM specific Probe with Alpha-Sat 11, dual-colour

Come to see us

Meeting

French Society of Haematology

Association of Clinical Cytogenetics

European Society of Human Genetics

German Tumour Cytogenetics Meeting

Association of Genetic Technologists (AGT) 28th Annual meeting

4th European Cytogenetic Conference

Date

March 16-18

April

May 3-6

May 15-17

June 5-8

September 6-9

Location

Paris, France

Glasgow, UK

Birmingham, UK

Celle, Germany

Atlanta, Georgia

Bologna, Italy

The Technical Advisor

Mixing 3 Qbiogene Telomeres and 2 Qbiogene Direct Satellites

In a workshop at Institut Pasteur, Paris, a mix of 3 telomeres and 2 PSAT satellite probes has been successfully hybridised.

Protocol

- 1) Slide pretreatment and denaturation
Please follow the datasheet. It is necessary to do the slide denaturation in formamide
- 2) Probe Preparation
Mix 3µl of each telomere and 1µl of each satellite probe, mix. Centrifuge for 2-3 seconds. Denature at 72°C for 5 minutes.
- 3) Hybridisation
Follow the hybridisation protocol as indicated in the data sheet
- 4) Post Hybridisation wash
Wash slides in 0.5XSSC/SDS for 5 minutes at 72°C.
- 5) Counterstain
Please follow the datasheet

Comments:

The protocol on the left hand side has worked perfectly for this probe combination.

However, we do not recommend complex probe mixtures in routine work. In our experience good results can only be obtained in perfect slide preparations.

Even slight residues of Cytoplasm can result in very low signals.

Aquamouse



Because our **Aquamouse** was so popular last year we have decided to continue this offer.

For each order higher than 900 € (or 600 £) you will receive a Aquamouse (PS2 compatible).

New / Old Probe - Improved

All Human Centromere - direct labeled

The All Human Centromere Probe is a mixture of Alpha-Satellite sequences which are hybridising to all centromeric region of all human chromosomes. According to our results this probe provides better signal and coverage than the previously offered indirect version (cat.# CP5095)

Cat.#	Description	no. test
PAHC001*	All Human Centromere Probe	10

* add -R for red or -G for green Fluorophore

Reminder

FISH WORKSHOPS 2003 at Qbiogene, Illkirch, France

Metaphase/Interphase Molecular Cytogenetics 2-Day Workshop, June 19 - 20, December 4 - 5
Tissue Molecular Cytogenetics (FISH on PETS) 2-Day Workshop, March 20 - 21, October 9 - 10

FAX BACK

+33 (0) 3 8867 1945

Contact Details

Name (Prof, Dr, Mr, Mrs, Miss, Ms):

.....

Department.....

.....

Address.....

.....

.....

..... Postcode.....

Tel.....

Fax.....

E-mail.....

Please send me the following information.....

Please send me copy of the 2003 Qbiogene Molecular Cytogenetics Catalogue

Hardcopy

CD only

I would like to register for the workshop:

a. Metaphase/Interphase Molecular Cytogenetics workshop


June 19-20, Dec. 5-6

b. Tissue Molecular Cytogenetics workshop

March 20-21, Oct. 9-10

Please send me the 2003 Qbiogene Molecular Biology Catalogue

Please tick this box if you do not wish to be retained on our mailing list

 molecular cytogenetics	France & Belgium, Suisse Tel: +33 (0) 388 675 425 Fax: +33 (0) 388 671 945 Tech : +33 (0) 388 675 423 techservfr@qbiogene.com	Deutschland, Österreich, Schweiz Tel: 0800 409058 Fax: +49 (0)6221 411062 Tech: +49 (0)6221 894 231 techservde@qbiogene.com	United Kingdom Tel: 0800 328 8401 Fax: 0800 085 3090 Tech: 0800 328 8401 techservuk@qbiogene.com
--	--	--	---